

### 28003

### Permanent-Magnetic Clamping Plates

#### Type

**Strong magnetic system.** On/off-switching by means of hand lever. Equipped with longitudinal and transversal stops. **Magnetic field without scatter**, this prevents a magnetisation of the workpiece. Magnetic force: max. 80-100 N/cm<sup>2</sup>.

#### 28003 102-103

#### Application

Especially for machining workpieces with a thickness of less than 5 mm and 15 mm Ø or diameter.

#### 28003 106-116

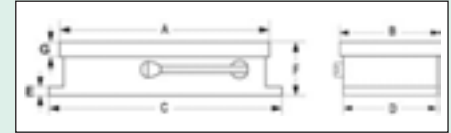
#### Application

For grinding projects.

#### Note:

*Machining of the top plate without negatively influencing the holding power is possible up to a depth (in steel) of 15 mm (non-ferrous metals up to a depth of 6 mm). Fastening of the clamping plates to the machining table by means of clamping claws.*

28003



A	B	C	D	E	F	G	Pole spacing steel / non-ferrous metals	Weight	28003	...
mm	mm	mm	mm	mm	mm	mm	mm	kg		
150	100	165	97	15	65	23	6 / 1,5 + 2 / 1,5	7		102
200	100	213	97	15	65	23	6 / 1,5 + 2 / 1,5	9		103
255	130	265	127	15	65	23	6 / 5	13		106
250	150	258	147	15	65	23	6 / 5	15		110
300	150	308	147	15	65	23	6 / 5	18		111
400	150	410	147	15	65	23	6 / 5	23		113
400	200	413	197	15	72	23	6 / 5	32		116

### 28006

### Permanent-Magnetic Clamping Plates

#### Type

**Strong magnetic system.** On/off-switching by means of hand lever. Equipped with longitudinal and transversal stops. **Magnetic field without scatter**, this prevents a magnetisation of the workpiece. Magnetic force: max. 120 N/cm<sup>2</sup>.

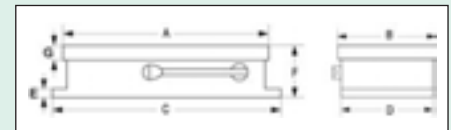
#### Application

For heavy-duty machining such as milling as part of roughing.

#### Note:

*Machining of the top plate without negatively influencing the holding power is possible up to a depth (in steel) of 15 mm (non-ferrous metals up to a depth of 6 mm). Fastening of the clamping plates to the machining table by means of clamping claws.*

28006



A	B	C	D	E	F	G	Pole spacing steel / non-ferrous metals	Weight	28006	...
mm	mm	mm	mm	mm	mm	mm	mm	kg		
250	150	260	145	20	93	29	8 / 5	20		201
300	150	310	145	20	93	29	8 / 5	24		202
300	200	295	195	20	93	29	8 / 5	29		207
400	200	395	195	20	93	29	8 / 5	39		208
450	250	445	245	20	93	29	8 / 5	57		214

### 28007

### Permanent-Magnetic Clamping Plates

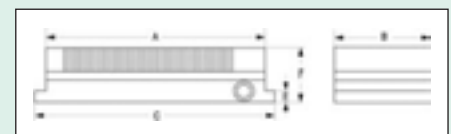
#### Type

**Strong neodym magnetic system.** On/off-switching by means of hand lever. Equipped with longitudinal and transversal stops. **Magnetic field without scatter**, this prevents a magnetisation of the workpiece. Magnetic force: max. 70 N/cm<sup>2</sup>.

#### Application

For thin-walled and small workpieces. Also suitable for erosion machines.

28007



A	B	C	E	F	Pole spacing steel / non-ferrous metals	Weight	28007	...
mm	mm	mm	mm	mm	mm	kg		
200	100	215	10	40	1,5 / 0,8	7		102
250	150	265	10	40	1,5 / 0,8	13		105
300	150	315	10	40	1,5 / 0,8	15		106
400	150	415	10	40	1,5 / 0,8	20		108

28008

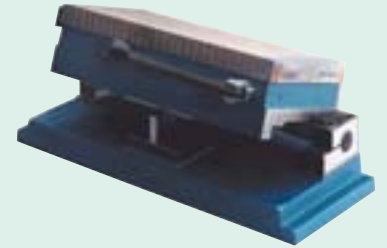
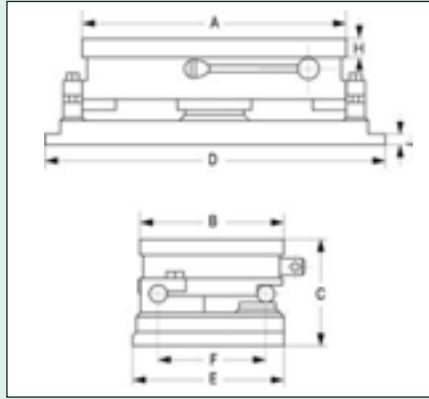
Sine Tables with Permanent-Magnetic Clamping Plate

Type

**Strong magnetic system.** On/off-switching by means of hand lever. Equipped with longitudinal and transversal stops. Pivoting around the longitudinal axis. Highest accuracy at low construction height. Pivoting range 0-45°, accuracy +/- 10 sec.

Application

For grinding and eroding.  
 Scope of supply: wooden box and sine conversion table.



28008

A	B	C	D	E	F	H	J	Pole spacing steel / non-ferrous metals	Weight	28008	...
mm	mm	mm	mm	mm	mm	mm	mm	mm	kg		
150	100	118	238	122	70	23	15	6 / 1,5 + 2 / 1,5	12		201
255	130	125	345	152	100	23	15	6 / 1,5 + 2 / 1,5	25		302
250	150	133	340	165	100	23	15	6 / 1,5 + 2 / 1,5	30		304
300	150	133	395	165	100	23	15	6 / 1,5 + 2 / 1,5	36		305
350	150	139	445	165	100	23	15	6 / 1,5 + 2 / 1,5	40		306
400	150	139	492	165	100	23	15	6 / 1,5 + 2 / 1,5	44		307

28010

Round Permanent-Magnetic Chuck

Type

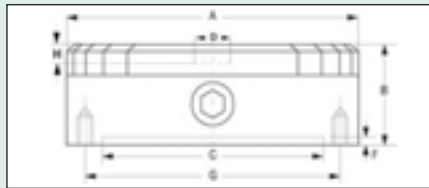
**Extremely Strong magnetic system with fine parallel pole spacing.** On/off-switching by means of hand lever. Centring grooves for a facilitated alignment. Infinitely adjustable magnetic force. Magnetic force: max. 80 N/cm².

Application

For grinding and eroding even of small workpieces.

Note:

Centre holes available on request (see table).  
 Furthermore, boreholes can be drilled into the top plate without negative influence on the holding power (steel 15 mm / non-ferrous metals 6 mm).



28010

A	B	C	D	F	G	H	Threaded hole	Pole spacing steel/non-ferrous metals	Weight	28010	...
mm	mm	mm	mm	mm	mm	mm		mm	kg		
130	62	90	15	2,5	120	7	4 x M 6	4 / 1,5 + 2 / 1,5	5		102
160	75	125	20	3,0	142	6	4 x M 8	6 / 1,5 + 2 / 1,5	8		103
200	80	150	20	4,5	182	6	4 x M 8	6 / 1,5 + 2 / 1,5	13		104
250	80	200	20	4,5	232	6	4 x M 8	6 / 1,5 + 2 / 1,5	20		105

28012

Round Permanent-Magnetic Chuck

Type

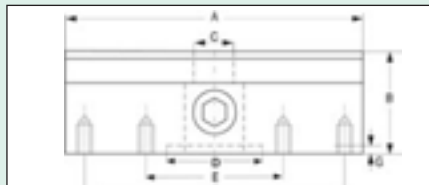
**Strong neodym magnetic system with radial parallel pole spacing.** On/off-switching by means of hand lever. Centring grooves for a facilitated alignment of workpieces. Magnetic force: max. 100 N/cm².

Application

For grinding and turning.

Note:

Through holes in the chucks available on request (see table).



28012

A	B	C	D	E	F	G	Threaded hole	Number of poles	Weight	28012	...
mm	mm	mm	mm	mm	mm	mm			kg		
150	68	20	50	80	120	5	M 6 x 10 (8)	10	7		101
200	68	25	60	110	180	5	M 6 x 12 (8)	12	13		102
250	68	30	60	140	220	5	M 6 x 12 (8)	16	20		103
300	68	30	80	180	260	5	M 8 x 16 (8)	16	30		104

### 28042

### Laminated Chuck Blocks and Plates

#### Type

Silver-brazed steel brass composition. Flat or with prism. Layers made of 3 mm steel / 1 mm brass. Laminated chuck blocks are not magnetic but highly conductive.

#### Application

Only used in conjunction with magnetic clamping plates.

#### Note:

The chucks can be machined on all sides in order to customise them to the workpiece.

#### 28042 201

#### Laminated Chuck Blocks

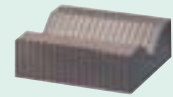
With prism (90°) (pair).

#### 28042 202-203

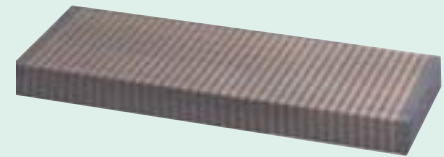
#### Laminated Chuck Plates

With pole spacing (piece).

28042 201



28042 202-203



Length x Width x Height mm	28042	...
100 x 80 x 40	201	
150 x 75 x 25	202	
250 x 75 x 25	203	

### 28048

### Plate Demagnetisers

#### Type

With indicating lamp, on-off-switch and plug connection.

Rating: AC 230 Volt, 50 Hz.

#### Application

No-hassle demagnetisation of workpieces.

#### Note:

Cat.-no. 28048 103 can be used without interruption (100 % ED).

28048



Length x Width x Height mm	Power VA	28048	...
165 x 120 x 115	286	101	
175 x 220 x 120	660	102	
210 x 155 x 110	45	103	

### 28050

### Manual Demagnetisers

#### Type

With indicating lamp, on-off-switch and plug connection.

Rating: AC 230 Volt, 50 Hz.

#### Application

No-hassle demagnetization of workpieces.

28050



Length x Width x Height mm	Power VA	28050	...
120 x 105 x 180	1330	101	

### 28052

### Tunnel Demagnetisers

#### Type

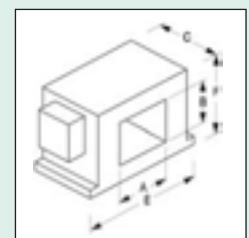
With indicating lamp, on-off-switch and plug connection.

Rating: AC 230/400 Volt, 50 Hz.

#### Application

Suitable for runs of workpieces with remaining magnetism.

28052



A mm	B mm	C mm	E mm	F mm	Power VA	28052	...
150	60	200	323	166	794	101	
200	100	200	415	240	2066	102	

wagner  
magnete

## Electric Permanent-Magnetic Clamping Plates

1

A new generation of clamping plates, which has remarkable advantages when compared to standard electric or permanent-magnetic clamping plates:

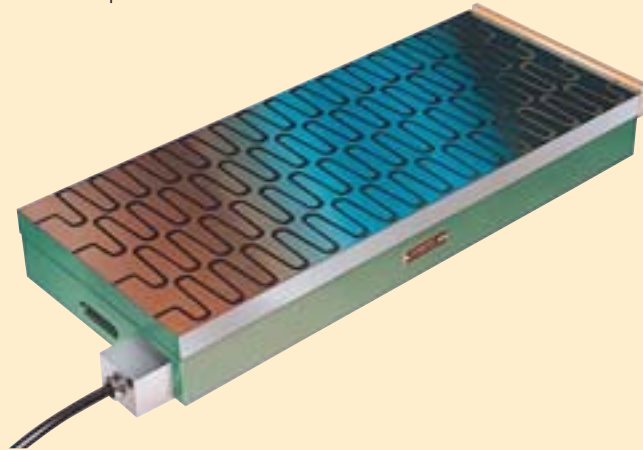
- |                               |  |
|-------------------------------|--|
| higher accuracy               | • no generation of heat  |
| perfect safety                | • thanks to remote control of the magnet   |
| great profitability           | • a short impuls generates the clamping, which will last until power is switched off |
| Direct connection to machines | • thanks to pulse contact control with NC control                                    |
| high operating safety         | • in case of a power outage, the clamping plate will retain full magnetic force      |

The adhesive force is dependent on the type of pole spacing and the percental occupation of the tool, as well as on the contact surface, thickness, surface characteristics and quality of the material of the workpiece.

**The set consists of:**

- Electric permanent-magnetic clamping plate
- Pulse contact control
- Control unit

Please send us your enquiry!



www.atorn.com



## Performance requires quality.

Short chucks by ATORN:

- high-strength materials
- perfect concentricity accuracy
- large clamping range
- high clamping force

This is but one example of **ATORN's** high-quality clamping tools.

**ATORN®**